



## PLENUM BOXES

UPK1, UPK2, UPK3, UPK-QC, SPB, FPB



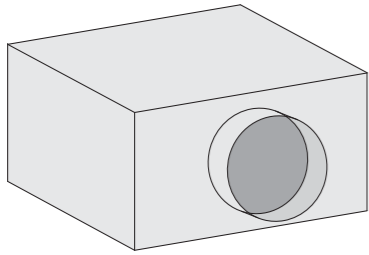


**PLENUM BOXES - UPK**

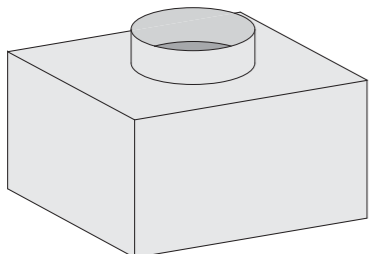
- Plenum box for Klimaoprema diffuser plates both for supply and exhaust
- Made out of galvanized steel sheet
- Available with next generation sound insulation for high-demanding acoustic areas

**Plenum box UPK1**

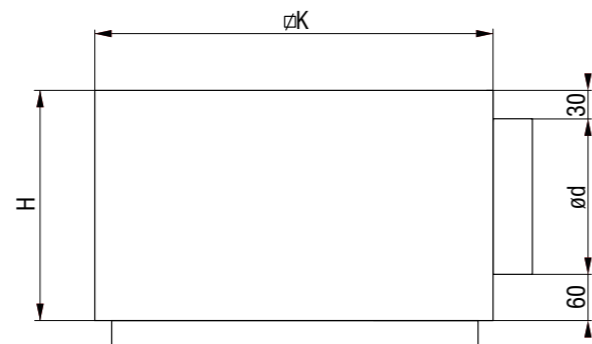
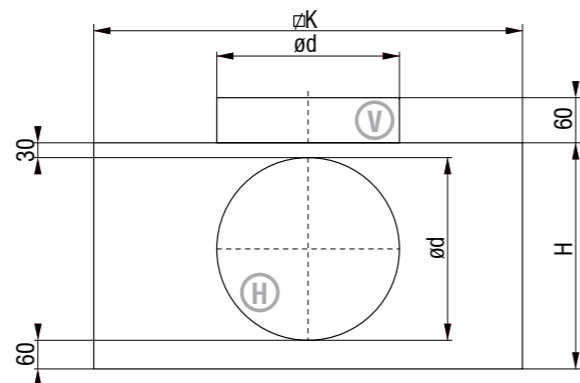
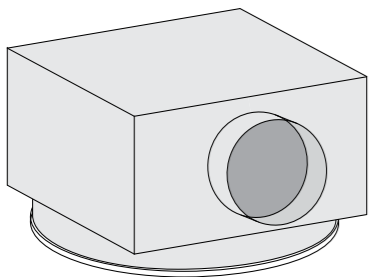
-horizontal connection UPK1 - H



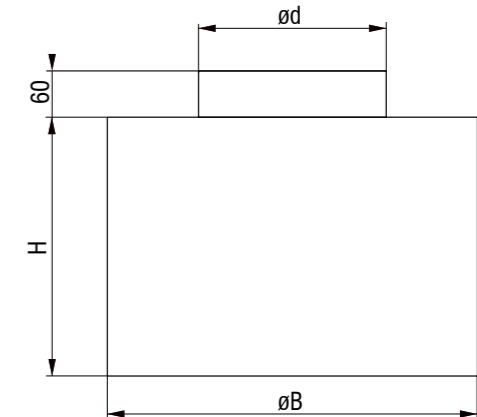
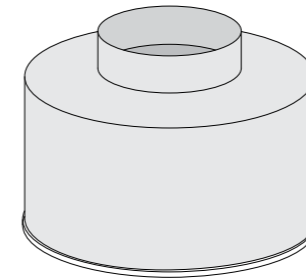
-vertical connection UPK1 - V



**Plenum box for round diffuser UPK2**



**Plenum box for round diffuser UPK3**



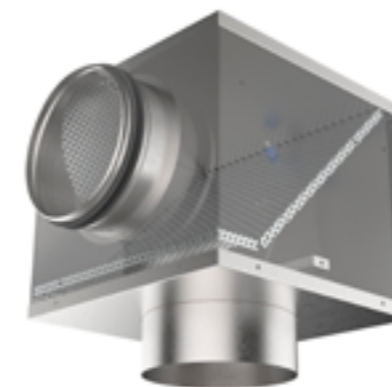
**Dimensions**

UPK1	K [mm]	H [mm]	$\varnothing d$ [mm]
300	284	250	158
310	294	250	158
400	384	290	198
500	484	290	198
600	590	340	248
625	615	340	248
800	790	405	313

UPK2	K [mm]	H [mm]	$\varnothing d$ [mm]
300	284	250	158
310	294	250	158
400	384	290	198
500	484	290	198
600	590	340	248
625	615	340	248
800	790	405	313

UPK3	$\varnothing B$ [mm]	H [mm]	$\varnothing d$ [mm]
300	284	200	158
310	294	200	158
400	384	200	198
500	484	200	198
600	590	200	248
625	615	200	248
800	790	300	313

**Optional equipment for quick commissioning ("-QC")**



**UPK-QC**

- Equipped with fixed measurement tappings for precise airflow measurement, regulating damper, strings for calibration and seals on duct and diffuser connection
- Available with next generation sound insulation for high-demanding acoustic areas

**Ordering key**

Type **UPK - QC - 600 - A - H -  $\varnothing d$  - Z**  
 Quick commissioning (optional)  
 Size  
**A** - supply air  
**B** - exhaust air  
**H** - horizontal connection  
**V** - vertical connection  
 Connection diameter  
 Insulation

